



10700 SW ALLEN BLVD
BEAVERTON, OR 97005

CES | NW

13190 SW 68th Parkway, Suite 150
Tigard, Oregon 97223
503.968.6655 www.cesnw.com

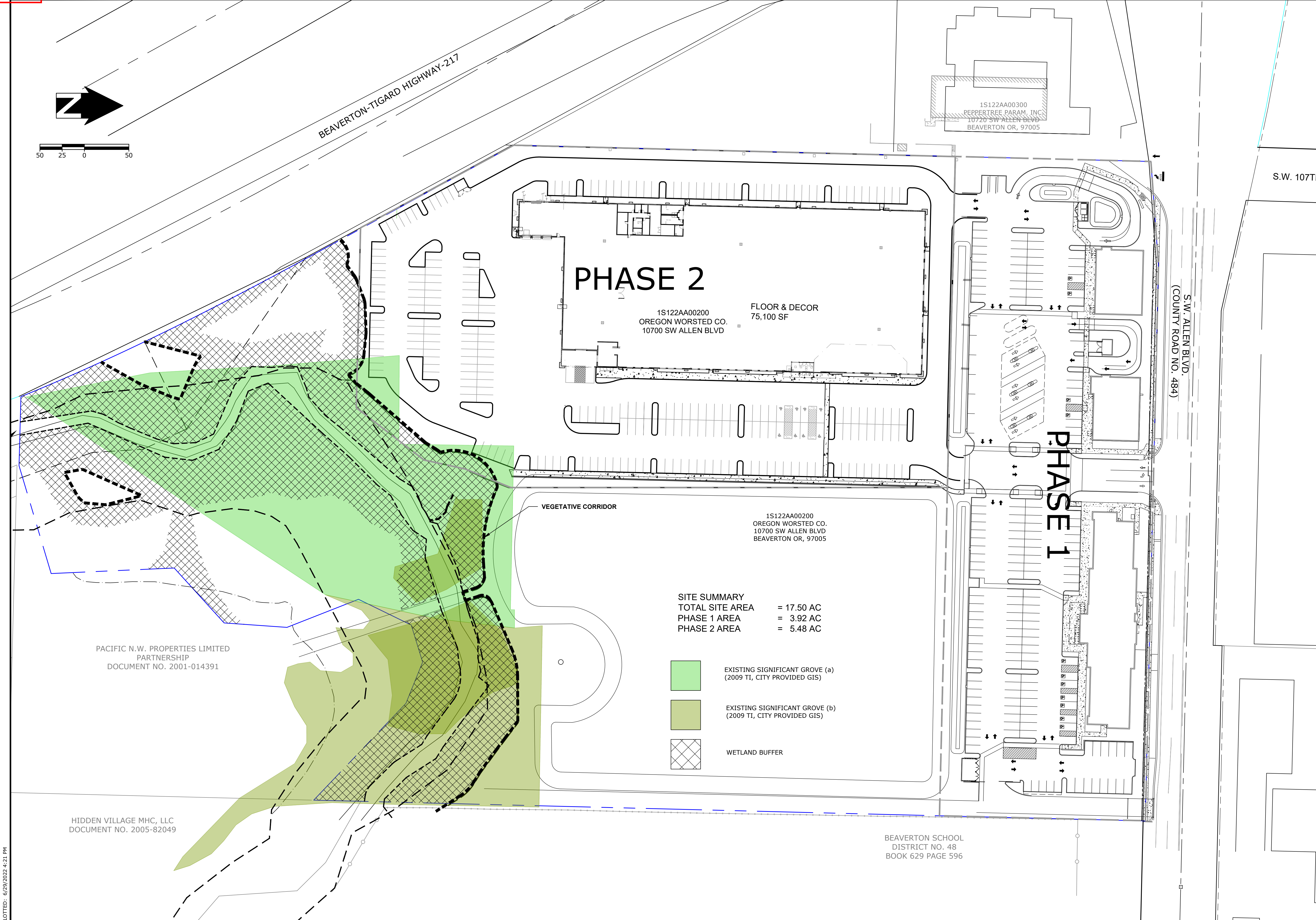
REVISIONS

NO.	DATE	BY	DESCRIPTION
1	06/29/2022	BRM	

SITE PHASING

C1.1

OF 20



Landscaping Area 32,142
 Total Area 239,183
 Landscaping % 13.4%



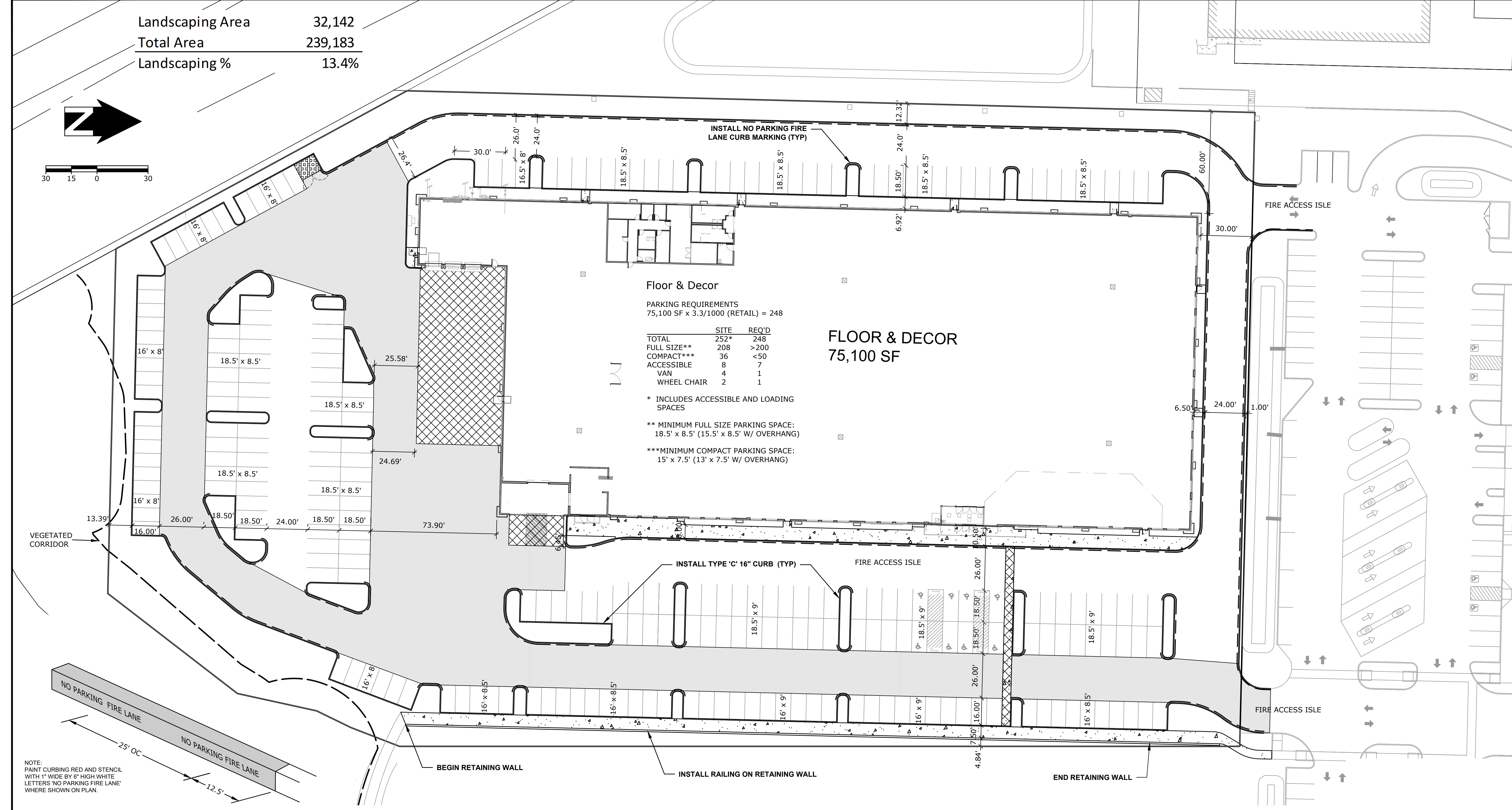
FLOOR & DECOR
 10700 SW ALLEN BLVD
 BEAVERTON, OR 97005

CES NW
 13190 SW 66th Parkway, Suite 150
 Tigard, Oregon 97223
 503.968.6655 www.cesnw.com

NO.	DATE	DESCRIPTION
1	06/29/2022	BOM

PROJECT NO.: 3720
 DESIGNED BY: ARW
 DATE: 06/29/2022
 DRAWN BY: BOM

SITE PLAN
 SHEET
C3.0
 OF
 20

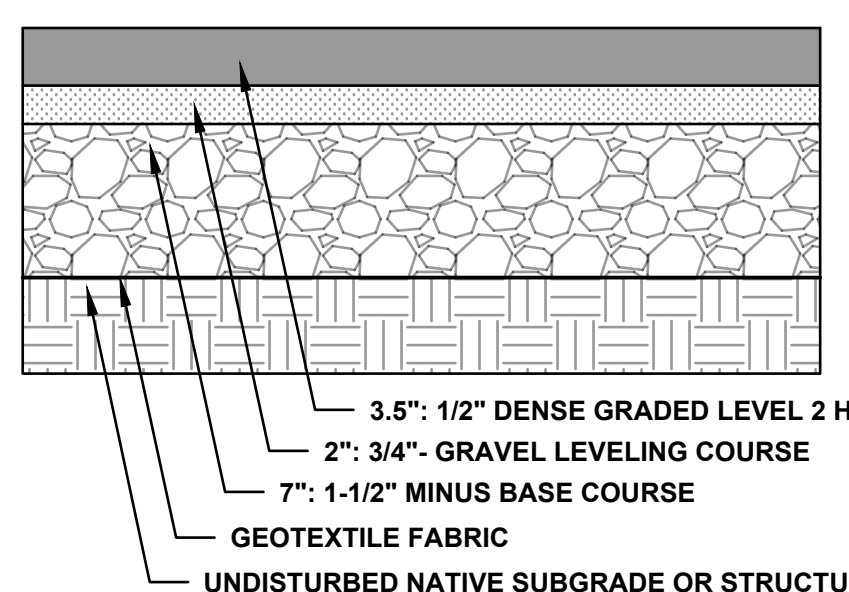


NO PARKING FIRE LANE CURB MARKING

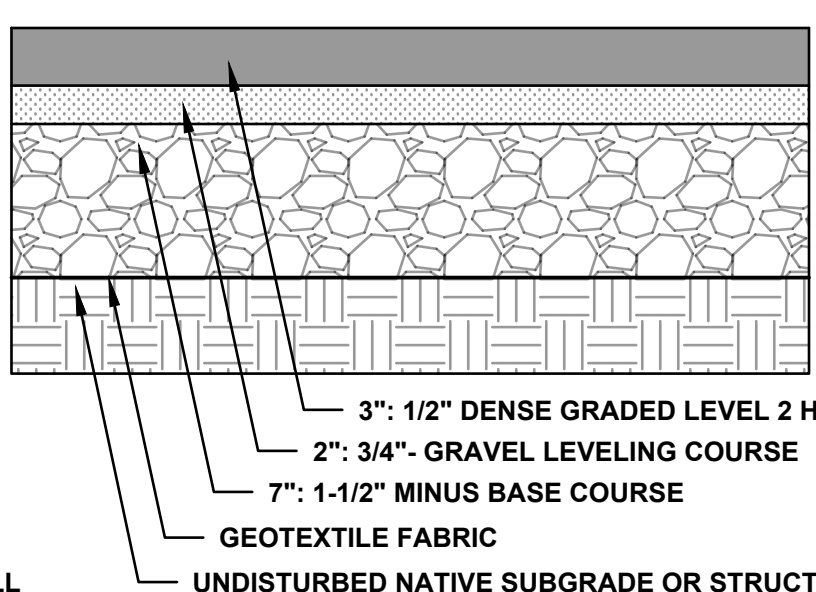
NOTE:
 PAINT CURBING RED AND STENCIL
 WITH 1" WIDE BY 6" HIGH WHITE
 LETTERS "NO PARKING FIRE LANE"
 WHERE SHOWN ON PLAN.

- HEAVY DUTY HMAC PAVEMENT
- LIGHT DUTY HMAC PAVEMENT
- HEAVY DUTY PCC PAVEMENT
- TRASH RECEPTACLE PAD
- LIGHT DUTY PCC PAVEMENT

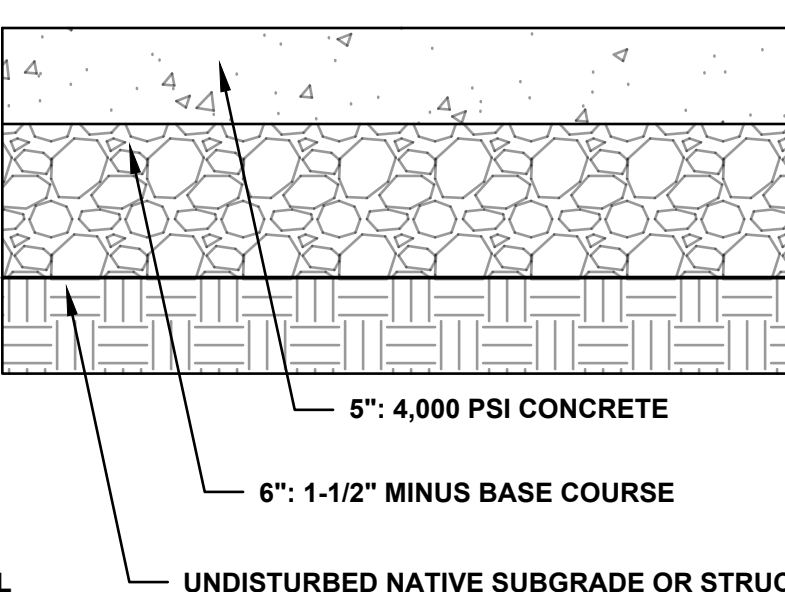
HEAVY DUTY HMAC PAVEMENT



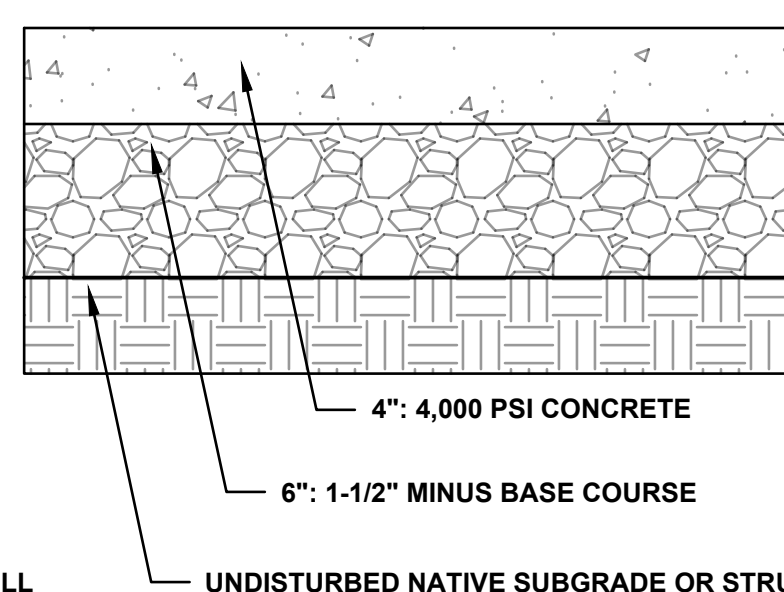
LIGHT DUTY HMAC PAVEMENT



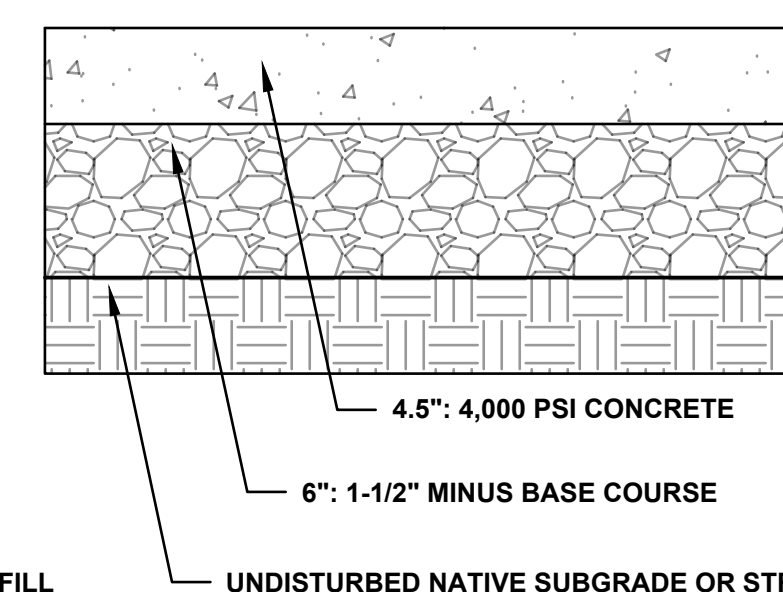
HEAVY DUTY PCC PAVEMENT



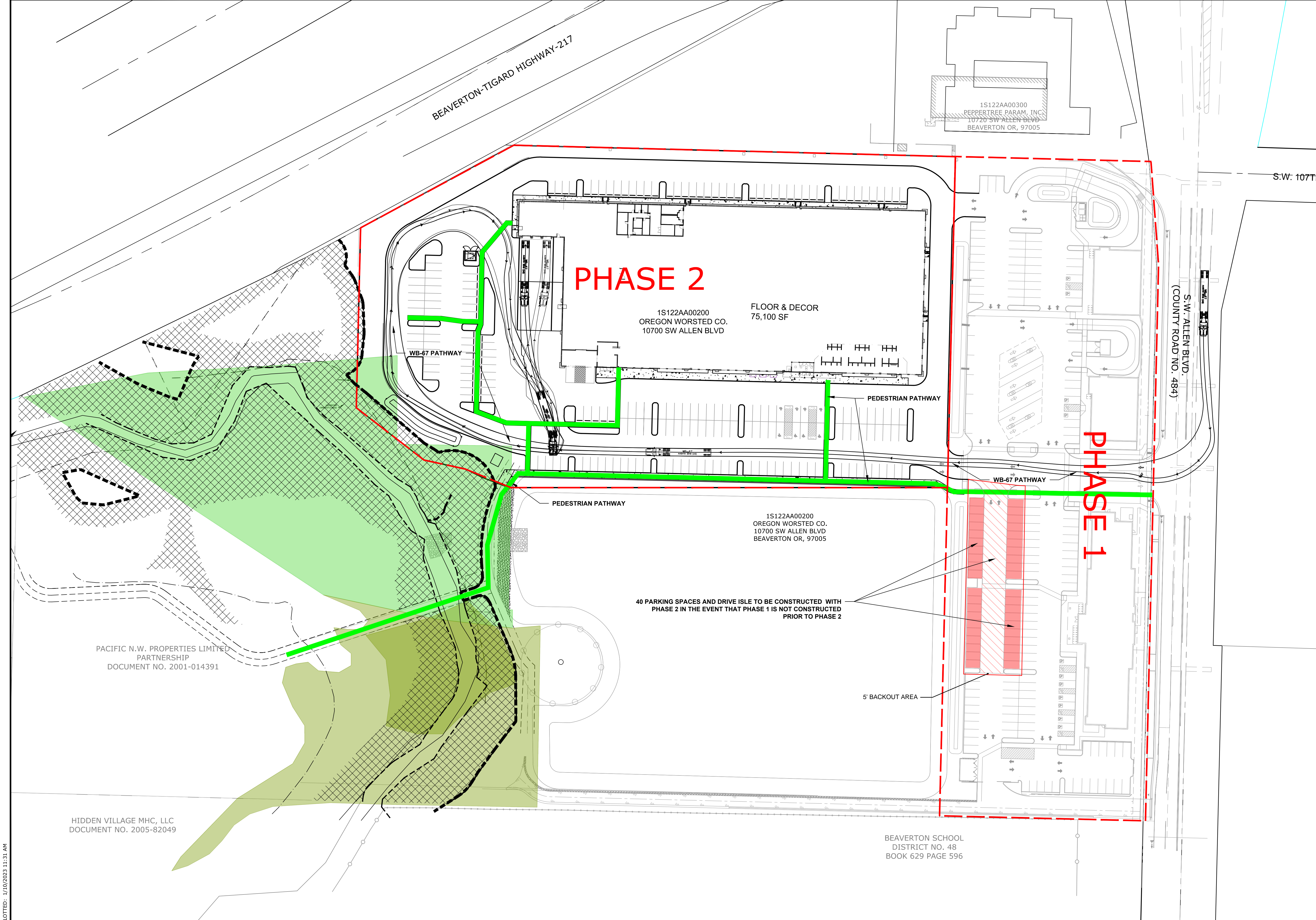
TRASH RECEPTACLE PAD



LIGHT DUTY PCC PAVEMENT



PLOTTED: 6/29/2022 4:22 PM



PHASE 2

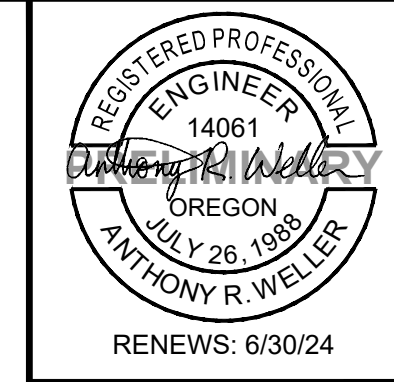
1S122AA00200
OREGON WORSTED CO.
10700 SW ALLEN BLVD
75,100 SF

PHASE 1

40 PARKING SPACES AND DRIVE ISLE TO BE CONSTRUCTED WITH
PHASE 2 IN THE EVENT THAT PHASE 1 IS NOT CONSTRUCTED
PRIOR TO PHASE 2

5' BACKOUT AREA

BEAVERTON SCHOOL
DISTRICT NO. 48
BOOK 629 PAGE 596



FLOOR & DECOR

10700 SW ALLEN BLVD
BEAVERTON, OR 97005

CES | NW

13190 SW 68th Parkway, Suite 150
Tigard, Oregon 97223
503.968.6655 www.cesnw.com

REVISIONS

PROJECT NO.:	107212032
DESIGNED BY:	ARW
DATE:	10/21/2023
DRAWN BY:	BRM

SITE CIRCULATION PLAN

SHEET C3.2

OF 19

PLOTTED: 1/10/2023 11:31 AM

PACIFIC N.W. PROPERTIES LIMITED
PARTNERSHIP
DOCUMENT NO. 2001-014391

HIDDEN VILLAGE MHC, LLC
DOCUMENT NO. 2005-82049